



REMI XS 1.0

Empowers Universal Data Xcess & Control





Empowers Universal Data Xcess & Control

REMI XS 1.0 is a cloud based system, designed to empower you with the advantage of information technology. It helps you to remain connected with your blood bank / laboratory at your convenience.

Continuous monitoring of storage conditions helps in quality control of very precious blood & its components and samples.

The storage cabinets are connected to Cloud application with the help of a wireless trans-receiver, REMI DATACOM and number of wireless modules. The modules attached to storage cabinets collect the data and transfers to REMI DATACOM which in turn transfers to the cloud server.

Cloud Based System Features:

- Online temperature monitoring and transmission of blood bank refrigerators, freezers, reagent storage units
- Central data recording for unlimited multiple equipments per site
- In-built rechargeable battery back-up with automatic change over for Un-interrupted monitoring / recording during mains power failure
- Alarms on mains power failure/resumption
- Wireless data transmission to remote cloud based server using cellular network / internet connection
- Un-interrupted data recording even during loss of internet/cellular connectivity
- Cloud based web software eliminates need for dedicated PC
- 24x7 Data access from any location through net connection on any device like PC, Smart phone, Laptop or Tab
- Cloud based server software ensures:
 - 24 x 7 Guaranteed Uninterrupted Services
 - 100% Back-Up Guarantee
 - Easy and Fast Log-In
- Single / Multiple Equipment View on Single Screen
- Tabular / Graphical View of Temperature for Each Equipment
- User Configurable Multiple Grouping and Sub-Grouping of Equipments for Hierarchical Access
- Independent Passwordprotected access
- User Assigned Tag (Name) to Each Equipment & Location (Site) for Easy Identification
- SMS / E-mail Alerts to User Defined Recipients on Alarms
- Equipment-wise & Location-wise Report Generation of Logged Data (Temperature Value, Alarm Status, Power Conditions, etc.)
- Automatic Periodic Report generation and dispatch via E-mail to User Defined Recipients
- Data Log Report, Alarm Log Report, History Graph & Audit Trail Report in PDF EXCEL Formats
- Audit Trail History of Critical Events & User Actions
- Multi-User Access Per Site & Multi-Site Access
- Off-line Data Recording with Minimum 5 years Data Storage Capacity



TRANSRECEIVER (DATCOM)

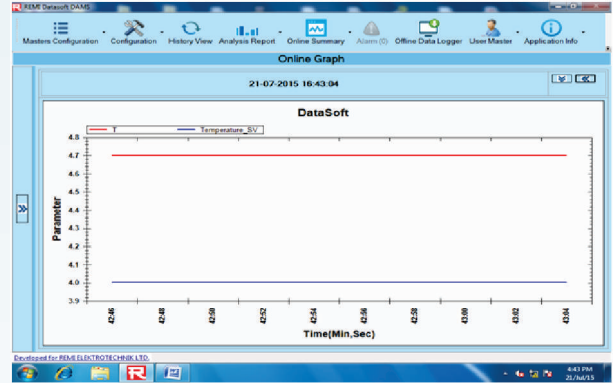
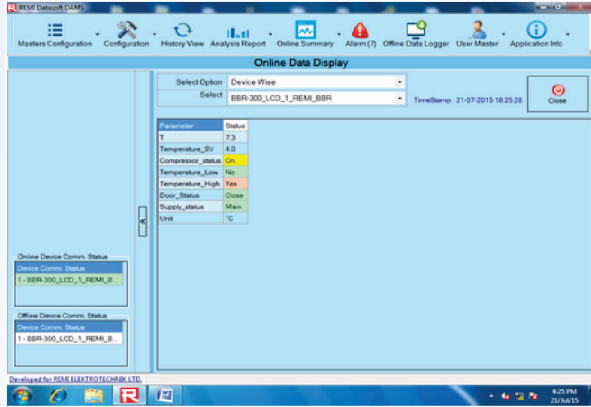


Blood Bank Refrigerators
+4°C

Plasma freezers
-40°C

Ultra low freezers
-86°C

Platelet Incubator Agitator
+22°C



REMI Blood Bank Mumbai-Maharashtra

Alarm Log Report

Department Name: TESTING Process Name: BLOOD STORAGE
Device Name: EBR_300_LCD_1_REMI_BBR Reported By: admin
From Date: 20.06.2015 00:00:00 To Date: 21.07.2015 23:59:59 Print Date & Time: 21.07.2015 16:29:23

LogDateTime	T_log	Tempera_ture_SV	Power up	Normal alarm modified	BTC modified	Alarm toggle	PV Alarm Toggle	Door open	Supply status	Temp Alarm status	Temperature Low_Lo	Temperature High_High	Temp unit
2015-07-21 16:20:30	OPEN	22.0	Yes	No	No	Yes	Yes	Close	Battery	Yes	No	Yes	°C
2015-07-21 16:20:45		13.3	22.0	No	No	No	Yes	Close	Battery	Yes	No	Yes	°C
2015-07-21 16:21:44		9.6	22.0	No	No	No	No	Close	Battery	Yes	No	Yes	°C
2015-07-21 16:22:33		9.7	4.0	Yes	No	No	Yes	Close	Battery	Yes	No	Yes	°C
2015-07-21 16:23:32		0.0	4.0	No	No	No	Yes	Close	Battery	Yes	No	Yes	°C
2015-07-21 16:23:34		4.3	4.0	No	No	No	Yes	Close	Battery	No	No	No	°C
2015-07-21 16:23:36		6.2	4.0	No	No	No	Yes	Close	Battery	Yes	No	Yes	°C

E-Mail Setting

Enable Email Setting

E-Mail Sender Details

Display Name: Megal Fernandes
E-Mail Address: megal@remilabworld.com
Password: *****
Confirm Password: *****
HostName: smtp.gmail.com

EnableSsl: Enable

E-Mail Receiver's Details

Add Remove Clear All

splay_Name EMail_Address

Save Setting CLOSE

